

FACULTY



Gregory W Albers, MD

USA

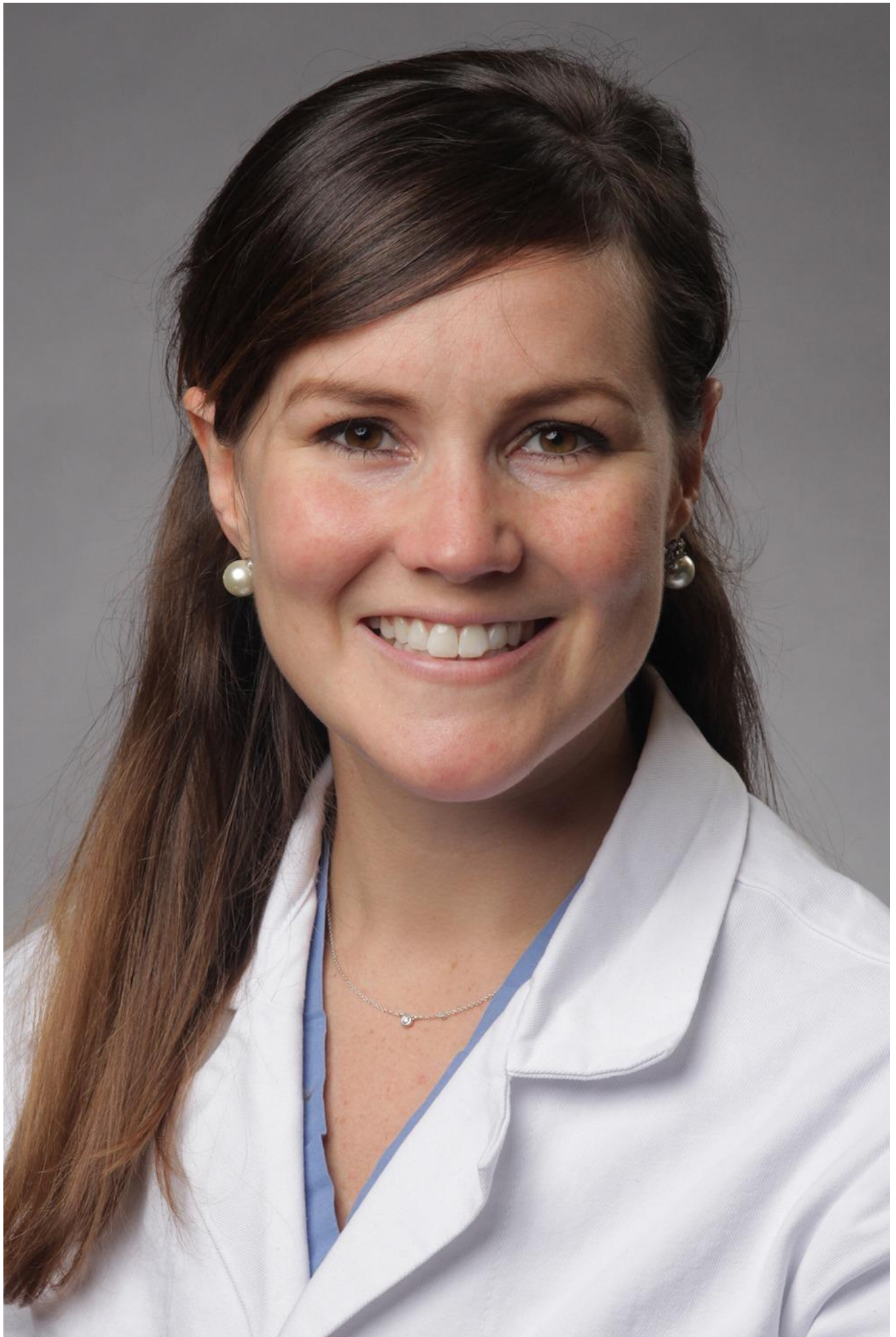
Coyote Foundation Professor of Neurology and Neurological Sciences; Professor, by courtesy, of Neurosurgery; Director, Stanford Stroke Center



Christine M. Albert, MD, MPH

USA

Dr. Albert is a Professor of Cardiology and the founding Chair of the Department of Cardiology at Cedars-Sinai Medical Center. She is also the Lee and Harold Kapelovitz Distinguished Chair in Cardiology within the Smidt Heart Institute at Cedars-Sinai.



Catherine (Casey) Albin, MD

USA

Dr. Catherine (Casey) Albin is an Assistant Professor of Neurology at Emory University. She completed her neurology training at Massachusetts General Hospital/Brigham & Women's Hospital and fellowship in medical simulation through the Learning Lab at MGH. She then completed her Neurocritical Care training at Emory, where she is now a Neurointensivist. Casey's research focuses on using innovative approaches to medical education to improve the care of patients with neurologic emergencies.



Gregory W Albers, MD

USA

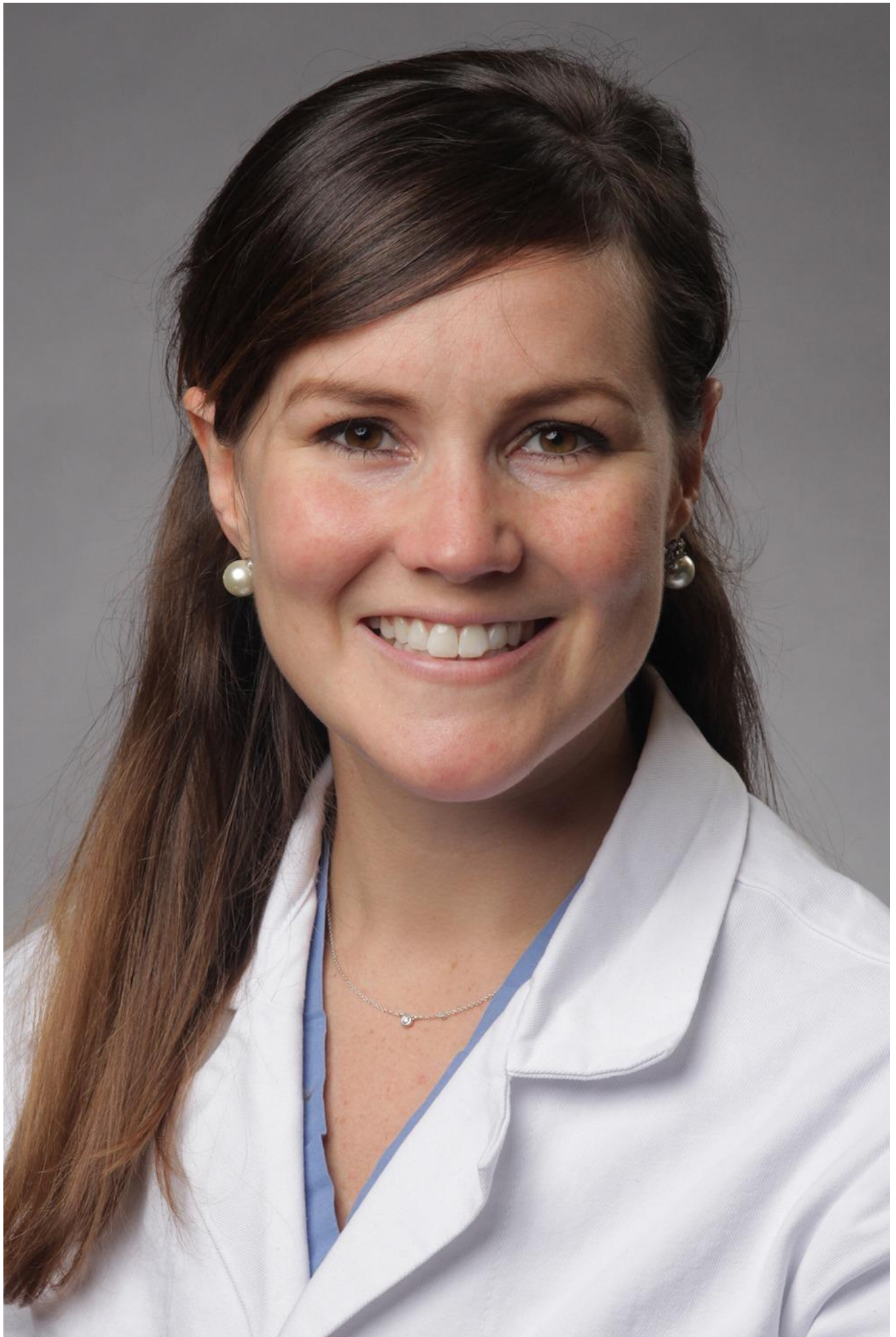
Coyote Foundation Professor of Neurology and Neurological Sciences; Professor, by courtesy, of Neurosurgery; Director, Stanford Stroke Center



Christine M. Albert, MD, MPH

USA

Dr. Albert is a Professor of Cardiology and the founding Chair of the Department of Cardiology at Cedars-Sinai Medical Center. She is also the Lee and Harold Kapelovitz Distinguished Chair in Cardiology within the Smidt Heart Institute at Cedars-Sinai.



Catherine (Casey) Albin, MD

USA

Dr. Catherine (Casey) Albin is an Assistant Professor of Neurology at Emory University. She completed her neurology training at Massachusetts General Hospital/Brigham & Women's Hospital and fellowship in medical simulation through the Learning Lab at MGH. She then completed her Neurocritical Care training at Emory, where she is now a Neurointensivist. Casey's research focuses on using innovative approaches to medical education to improve the care of patients with neurologic emergencies.



Gregory W Albers, MD

USA

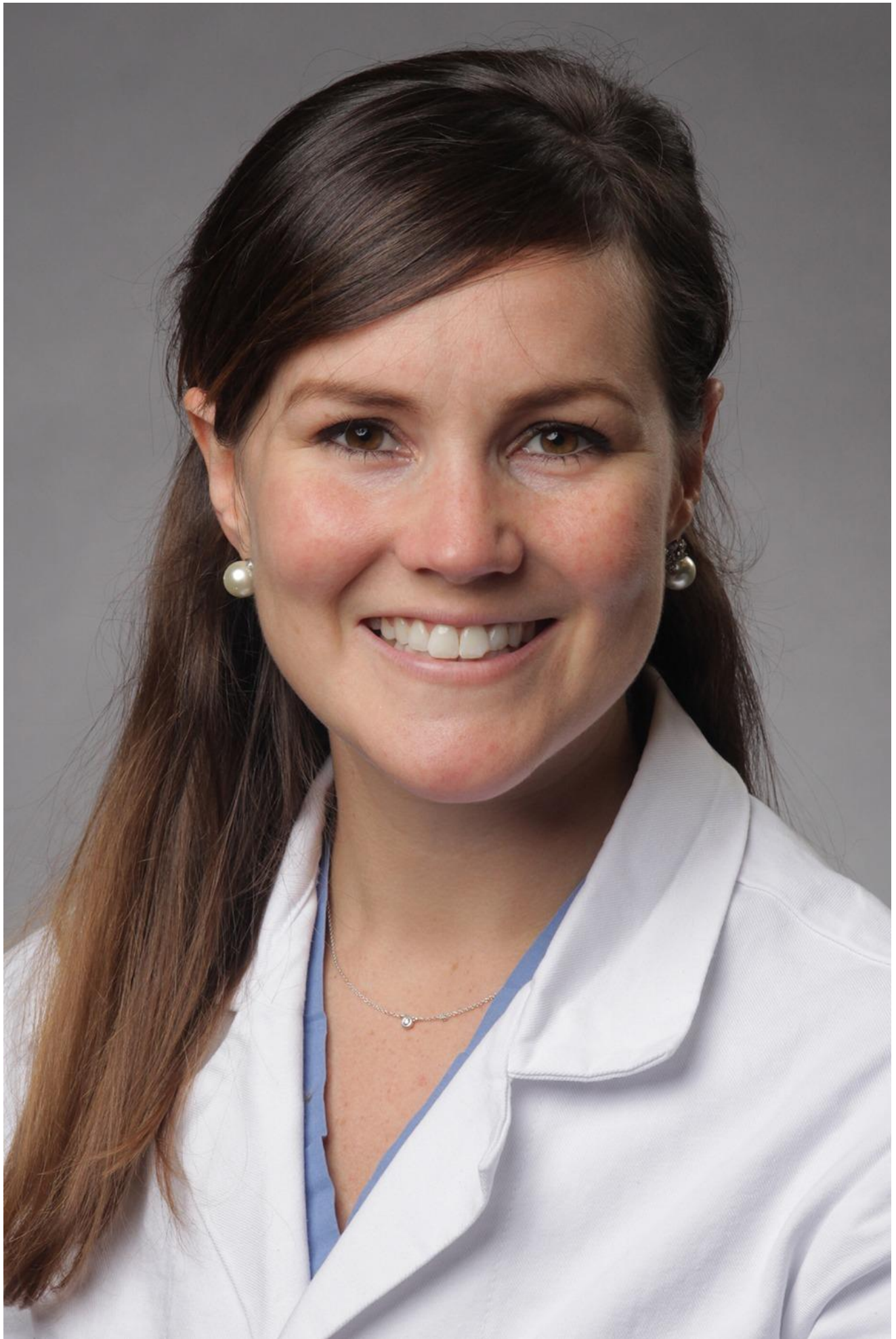
Coyote Foundation Professor of Neurology and Neurological Sciences; Professor, by courtesy, of Neurosurgery; Director, Stanford Stroke Center



Christine M. Albert, MD, MPH

USA

Dr. Albert is a Professor of Cardiology and the founding Chair of the Department of Cardiology at Cedars-Sinai Medical Center. She is also the Lee and Harold Kapelovitz Distinguished Chair in Cardiology within the Smidt Heart Institute at Cedars-Sinai.



Catherine (Casey) Albin, MD

USA

Dr. Catherine (Casey) Albin is an Assistant Professor of Neurology at Emory University. She completed her neurology training at Massachusetts General Hospital/Brigham & Women's Hospital and fellowship in medical simulation through the Learning Lab at MGH. She then completed her Neurocritical Care training at Emory, where she is now a Neurointensivist. Casey's research focuses on using innovative approaches to medical education to improve the care of patients with neurologic emergencies.

[illegible]